

# HPLC

## YL9300

### High Performance Liquid Chromatograph



#### ■ Compact Design

- Integrated LPG(Low Pressure Gradient) HPLC system
- Simple maintenance: Pump & Vacuum Degasser modules in a sliding drawer

#### ■ Perfect Performance

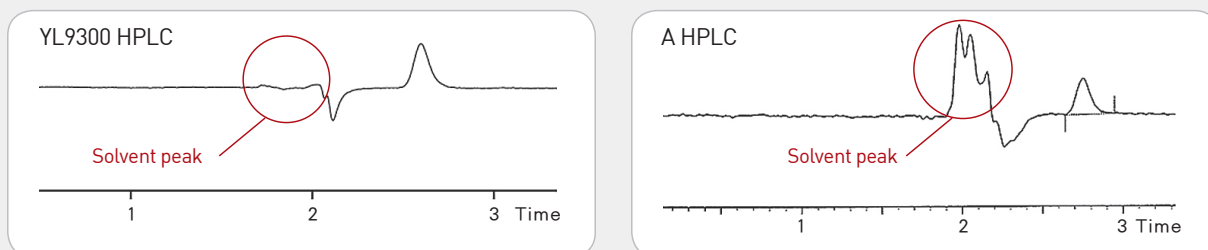
- Increased mobile phase composition efficiency
- Decreased solvent peak influence
- Narrow spectral bandwidth
- Substantially stabilized baseline with minimized noise level

#### ■ Impact to Competitors

- Competitive or even lower price than others
- High speed data process by network (LAN) communication
- Low maintenance cost

# YL9300 HPLC

YL9300 HPLC is an integrated HPLC system in a compact design including a vacuum degasser (mixer), quaternary pump and UV/Vis detector at a competitive price. The focus corrected optical design efficiently reduces mobile phase RI effect and provides enhanced baseline stability with a substantially minimized noise level especially in short wavelength range, which brings decreased solvent related peaks.



[ Comparison of a solvent peak influence ]

## ■ Vacuum Degasser

- Number of channel: 4 CHs
- Maximum flow rate: 10 ml/min per channel
- Internal volume per channel: 925 ul per channel
- Solvent contact materials: Teflon AF, PEEK and Glass-filled PTFE

## ■ Quaternary Pump

- Flow range: 0.001-5 ml/min (Standard)  
0.001-10 ml/min (Option)
- Flow rate accuracy:  $\leq \pm 1\%$  at 1 ml/min
- Flow rate precision:  $< 0.1\%$  RSD at 1 ml/min
- Number of eluent lines: 4
- Pressure pulsation:  $\leq \pm 0.5\%$  at 1 ml/min

## ■ UV/VIS Detector

- Wavelength range: 190~600 nm (Standard) /190~900 nm (Option)
- Spectral bandwidth: 5 nm
- Wavelength accuracy:  $\pm 1$  nm
- Wavelength precision:  $\pm 0.1$  nm
- Linearity:  $> 99.5\%$  at 2.5 AU (Acetone, 254 nm)
- Noise level:  $< \pm 0.35 \times 10^{-5}$  AU, 254 nm, dry cell
- Drift:  $< 1 \times 10^{-4}$  AU/hour

## ■ System Information

- Data communications: LAN
- Dimension: 375 X 470 X 545 mm (W X H X D)
- Weight: 27 Kg
- Safety & maintenance: Leak detection, Diagnostics, Error detection
- Power consumption: 150 W



YL INSTRUMENT CO., LTD.

Young Lin Bldg., 899-6, Hogye-dong, Anyang, 431-836, Korea  
TEL: 82-31-428-8700 / FAX: 82-31-428-8779  
E-mail: export@younglin.com  
Homepage: www.ylinstrument.com



These Products are manufactured by Young Lin  
ISO 9001-certified facility that is periodically audited by the  
registering body to ensure compliance